



## Komatsu PW160-8 Megarailer

VolkerRail Ltd.

**Address**

Eagre House  
J3 Business Park  
Carr Hill  
Doncaster  
South Yorkshire  
DN4 8DE

**W** [www.volkerrail.co.uk](http://www.volkerrail.co.uk)  
**T** +44 (0)1302 791 100  
**E** [marketing@volkerrail.co.uk](mailto:marketing@volkerrail.co.uk)





Komatsu PW160-8 Megarailer

VolkerRail has a fleet of highly adaptable and flexible Komatsu Road Rail Vehicles (RRV's) which are permitted to work next to rail lines open to traffic.

There are a wide range of attachments associated with our RRV's including various hydraulic grabs, ballast brushes, fast clipping machines and trailers, along with a wide range of specialist attachments for thimbling rail, ballast profiling, welding and more.

Our team of RRV driver maintainer operators, who are highly qualified and experienced, deliver a client focused service by providing:

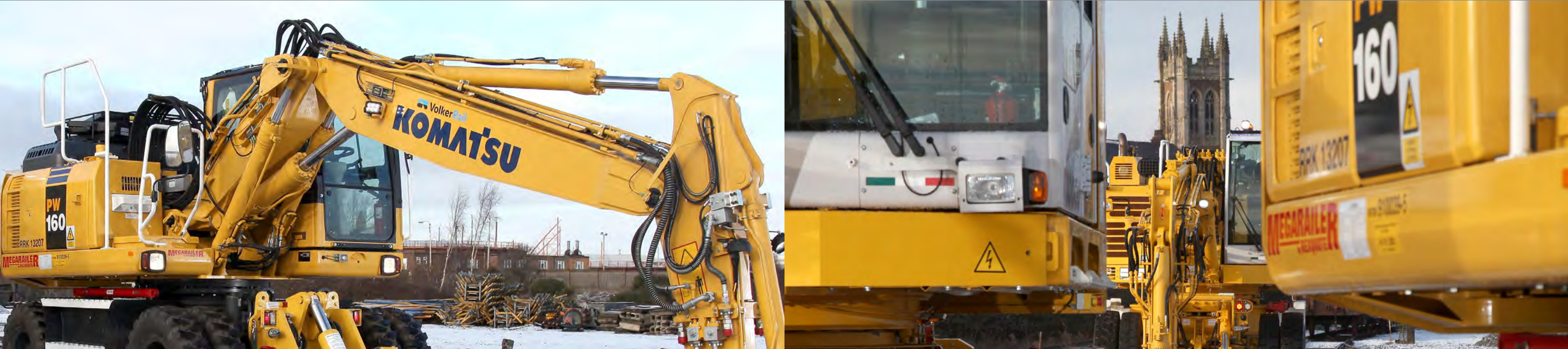
- Expert advice in all lifting and handling operations
- Plain line renewals, lifting panels solo or in tandem
- Lifting support for S&C renewals and construction
- Level crossing renewals
- Rapid and flexible client response
- Strong environmental awareness on site



Technical information

Weight:	24,600 kg
Maximum travelling speed:	19 mph (32Km/h)
Number of axles:	2
Overall Length:	7460 mm
Width:	2512 mm
Height (road):	3161 mm
Height (rail):	3316 mm
Maximum tail swing gauge exceedance:	690 mm
Minimum height of tail swing above rail head:	1385 mm
Minimum curve radius:	80 m
Maximum gradient:	1 in 25
Maximum travelling cant:	200 mm
Maximum working cant:	150 mm
Maximum on/off tracking cant:	100 mm
Wheel profile:	P1
Engine:	SAA4D107E-1 Tier 3a
Engine Power (2200 rpm):	97kW / 130 HP
Drive:	Hydrostatic / 9A
Rail wheels driven:	4
Hydraulic system pressure:	350 bar
Hydraulic system flow rate:	320 l/min
Volume fuel tank:	300 ltr
Year of construction:	2014

Expert advice in all lifting and handling operations

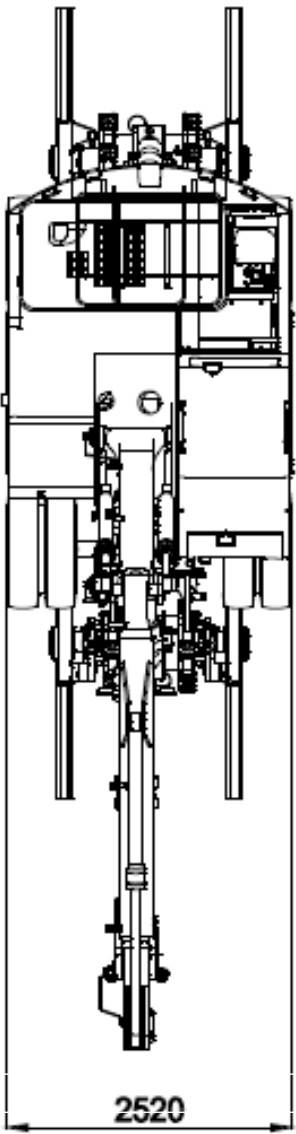






Operation information

Loading/off loading or on/off tracking:	1 Operator + m/c or c/c
Operation:	1 Operator + m/c or c/c
RCI system	Prolec PME Rail
ALO working	Yes
On/off track, travel and work under live overheads	Yes
Quick hitch installed:	Yes
Tandem lift mode	Yes
Towing capacity	48,000 kg / 3 trailers



Production Information

Lifting point	SWL	Maximum reach
Auxiliary	5tonne	6.5m
Quick Hitch (tool pin)	10tonne	7m
Quick Hitch Lifting Eye	5tonne	7.5m

A full set of duty charts are available upon request for all three lifting points and tandem lift modes.





Machines are fitted with state of the art mr3 rail axle system. This Increases the machines lifting capacity, when undertaking lift and carry duties and unlocked duties are increased over oscillating axle.

Rail mode: Level rail - Tool pin – unlocked - 0° - height 3m – Distance 3m = 6.39t

Rail mode: Level rail - Tool pin – unlocked - 180° - height 3m – Distance 3m = 6.39t

#### Attachments

- Volkerrail Attachments;
- Fassetta Beam
- Universal Beam
- 60ft Lifting Beam
- Log Grab
- Sleeper Grab
- Camlock
- Drag Clamp
- Pallet Forks
- Thimble
- Drum Carrier
- Clamshell Bucket
- Profile Bucket

- Ditch Bucket
- 2ft Bucket
- Tamping Bank



Rapid and flexible client response

