



RR14 EVO-2 MEWP



RR14 EVO-2/400 Mobile Elevating Work Platform

Mobile elevating work platforms (MEWPs) are road rail access machines used for a variety of working at height operations.

The RR14 EVO-2/400 Road-Rail Access Platform is a self-propelled platform specifically designed and developed as a road rail machine and first introduced to the UK in 2003. The articulating and telescopic boom lift allows for very flexible use on road or rail, whilst on rail the unit offers excellent side reach and lifting capacity due to its automatic self-levelling turret that allows the machine to operate on a 200mm cant and incorporates a self-locking oscillating axle.

The spacious cage allows handling of large and heavy tools utilising the 3 person, 400kg maximum cage capacity, and greater workplace versatility and placement with the fly-jib and 90+90 degrees of cage rotation. The auxiliary emergency diesel engine is equipped with a hydraulic pump enabling the operator to carry out all machine functions and vacate the rail tracks in any contingency.



RR14 EVO-2/400 Mobile Elevating Work Platform

- Hydrostatic drive - 4 driven rail wheels
- 4x4 transmission and locking differential
- Emergency auxiliary on board diesel engine can carry out all machine functions
- Two machines can be transported on one transport trailer
- 3 person - 400kg cage capacity
- Mechanical ALO locking device – either side – Network Rail approved
- Intuitive control system – simple to use
- Automatic levelling turret
- 3rd and 4th rail compliant
- High-speed travel on rails of 8mph
- Ready for towing 1 tonne trailer attachment
- Full UK VAB approval
- Pantograph attachment



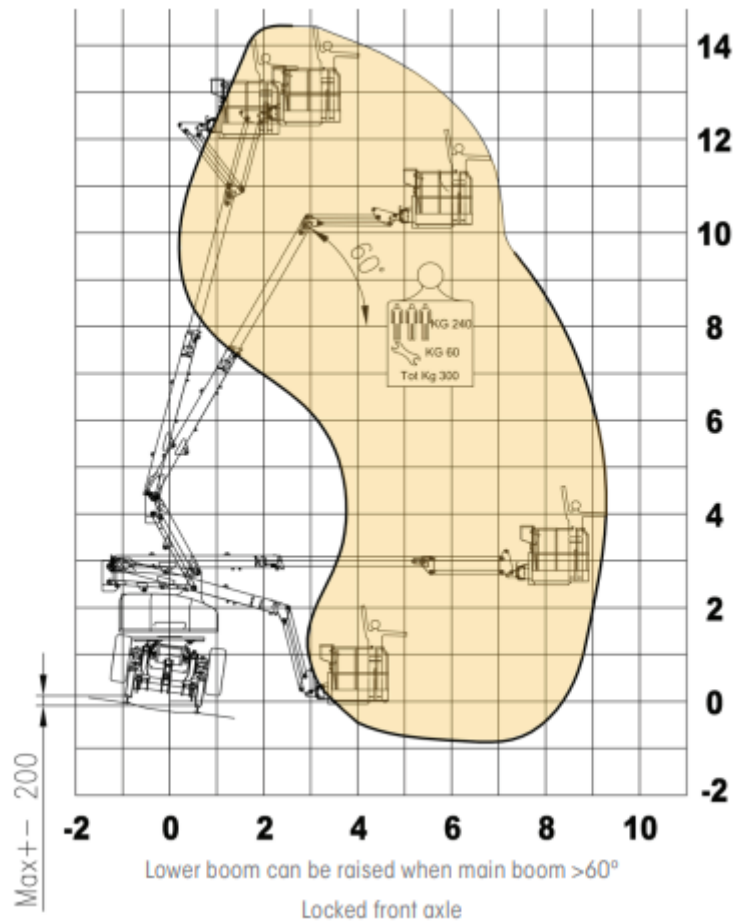
Technical information

Max. working height	14.4m
Max. cage floor height	12.4m
Max. lateral outreach (static) 300Kg	9.3m
Max. lateral outreach (static) 400Kg	6.3m
While driving (dynamic) 300 & 400Kg	6.3m
Turret rotation	400°/deg n.c
Basket rotation	°/deg 90+90
Fly jib length	1.5m
Length in stowed position	min 6.35m
Min. stowed width	2.36m
Min. stowed height	3m
Driving speed	12 Km/h
Minimum working radius	40m
Max operating cant	200mm
Max working gradient	1:16
Main engine power Hatz 3L41C	KW36 49Hp
Auxiliary engine power Hatz 1B40	KW6.5 9Hp
Basket swl Max	400kg
Active oscillating axle	yes
Max. allowed wind speed	45 Km/h
Basket dimensions	1.2 x 1.5 x 1.14m
Tyre size (foam filled)	12.5 x 18"
Oil reservoir	95L
Fuel reservoir	80L
Electric circuit	24 Vdc

Standard equipment

Hydrostatic drive - 4 wheels	Full UK VAB Approval
Automatic levelling of the upper platform structure	Interlock device to enable platform travel under live lines
180-degree mechanical locking device to allow the platform use with the adjacent line open to the railway traffic - NWR approved	Towing hitch and lights pre-arrangement for small trailers
Auxiliary diesel engine for emergency use	Easy to position for on and off tracking
Hydraulic oil cooler to monitor the hydraulic circuit temp	Fully compliant with the European directive EN280

RR14 EVO-2/400 300kg on rail



Working envelopes

RR14 EVO-2/400kg on rail

